

# ARTBOX

ARTBOX is a travelling professional curated exhibition space, promoting professional and emerging artists and makers, while also supporting community arts and culture projects in the Huon Valley.

## Conditions of Hire

ARTBOX is supported by:

Huon Valley Council, Tasmanian Community Fund and Bendigo Bank

## **BACKGROUND**

The Huon Valley Arts and Culture Strategy envisions 'a vibrant community in which art and culture is an expression of place, story and people that is unique to the Huon Valley'.

Huon Valley Council supports ARTBOX as a means of connecting people with creative products and experiences.

ARTBOX is a mobile exhibition space that welcomes proposals from artists, designers, festivals, curators, community and cultural groups in all art forms including but not limited to: visual arts, sculpture, craft, design, digital media, performance, installation/site specific works and cultural heritage that display innovative ideas and approaches.

Whilst providing a professional exhibition space, ARTBOX also provides opportunities for regional and remote communities in the Huon Valley to experience and engage with arts and culture.

This program has been supported by the Tasmanian Community Fund and is managed by the Huon Valley Council's Arts and Culture Program.

Applications that seek to engage with remote communities are encouraged. Preference will be given to artists, makers and producers based in, or working with or in the Huon Valley community.

## **ARTBOX DETAILS**

ARTBOX is a converted 20ft high cube shipping container with an interior space of 5700mm x 2180mm.

One long side has been fitted with glass for public viewing of exhibitions from the outside.

The interior consists of plain white walls with 10 metres of hanging track system, a wooden coloured floor and LED track lighting offering flexibility in where they are positioned.

ARTBOX can be powered by a nearby 15amp power point or a solar powered generator.

5 power points are available in the floor of the box.

A secured external speaker is available for use.

ARTBOX is designed to be unmanned, with public viewing from the outside and capacity to set lights/media/sound etc on timers.

## **CONDITIONS OF USE**

### **1. TOURING**

ARTBOX has been developed as a mobile exhibition space that will travel to townships across the Huon Valley, providing opportunities for artists to share their work and for regional communities to access exhibitions.

On occasion it may be possible for ARTBOX to showcase Huon Valley artists and makers by travelling to events outside of the Huon Valley.

### **2. EXHIBITION FEE**

To keep ARTBOX equitable for everyone, Huon Valley Council will continue to cover the cost of transport.

### **3. INSURANCE**

While all due care will be taken with supplied items, Huon Valley Council (HVC) is not responsible for loss, theft or damage. Suppliers are responsible for their own insurance cover of their exhibition content while on display in ARTBOX and in transit.

The hirer agrees that HVC staff may enter and exit premises during an exhibition. The Arts and Culture team at HVC will be available for questions or respond to needs that may arise during an exhibition and may check periodically with the hirer.

### **4. CLEANING AND REMOVAL OF RUBBISH**

Upon completion of an exhibition, the user is responsible for returning ARTBOX to the same clean condition in which it was found.

### **5. INSTALLATION/DISMOUNT**

It is the responsibility of the user to hang / install and dismount the exhibition / event.

ARTBOX is equipped with a gallery hanging system (Gallery@Home) for hanging art works, with 10 metres of hanging system (6 metres on rear wall and 2 metres on each side wall). String and hooks are available. Any plinths or other structures required will be the responsibility of the hirer. Works must be hung via the existing hanging system: No screws / nails / hooks or other fastenings are to be used. The exhibition must be displayed for the full period agreed.

Glitter or foil is not allowed on site. Only blu tack tape is allowed on the floors, walls or windows. Any damage will be charged to the user.

The exhibition must be displayed for the full period agreed. Any alterations to the space must be discussed prior with written permission from HVC staff.

Power points are in the floor and indicated on the floor plan. Data projector mounting is available on the ceiling with power and a HDMI socket leading to a storage box which houses a power system and speaker.

Please be aware ARTBOX has no storage facility. No responsibility will be taken for works not collected at the designated collection time.

## **6. NOISE**

A small speaker is installed in the side box of ARTBOX. Please be aware that ARTBOX may be placed near residential areas and therefore neighbourhood noise regulations do apply.

## **7. PUBLIC ENGAGEMENT ACTIVITY**

Hirers of ARTBOX are encouraged to present a Public Engagement Activity (utilising COVID safe protocols) during their hire. Examples of Public Engagement Activities include:

- an artist talk
- a curator talk
- a demonstration
- a performance element

## **8. FIRE AND CANDLES**

Fire and/or candles are not permitted in ARTBOX.

## **9. PERFORMING RIGHTS**

The Hirer shall take total responsibility for the securing and payment of all rights, including but not limited to, Writers Royalties and Musicians Royalties to the Australasian Performing Rights Association.

## **10. SALES**

Although artists and makers are encouraged to promote themselves during the exhibition, NO direct sales are to be made from the ARTBOX.

Artists contact details and websites/social media platforms are to be displayed in ARTBOX and on the HVC website/social media.

## **11. PROMOTION**

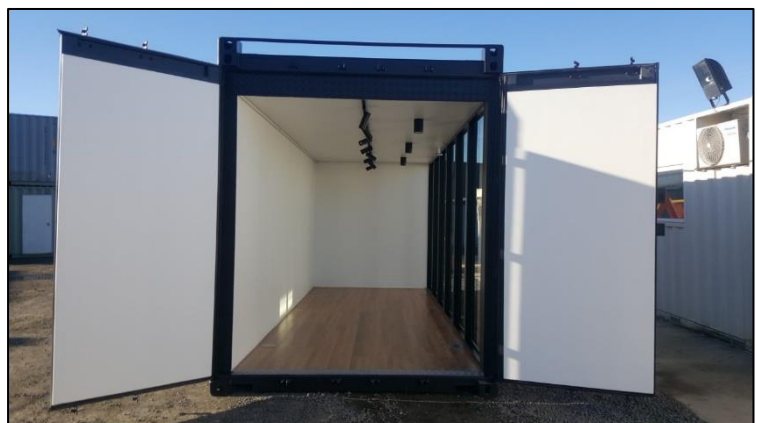
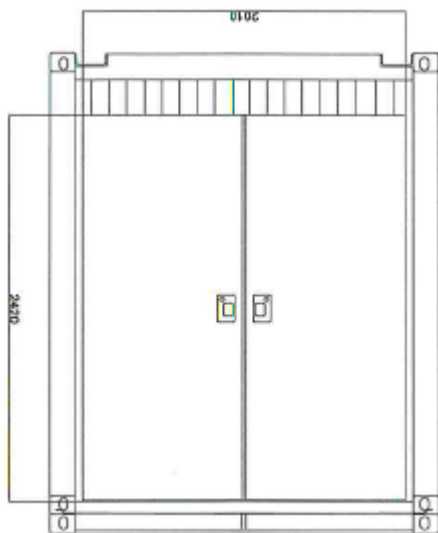
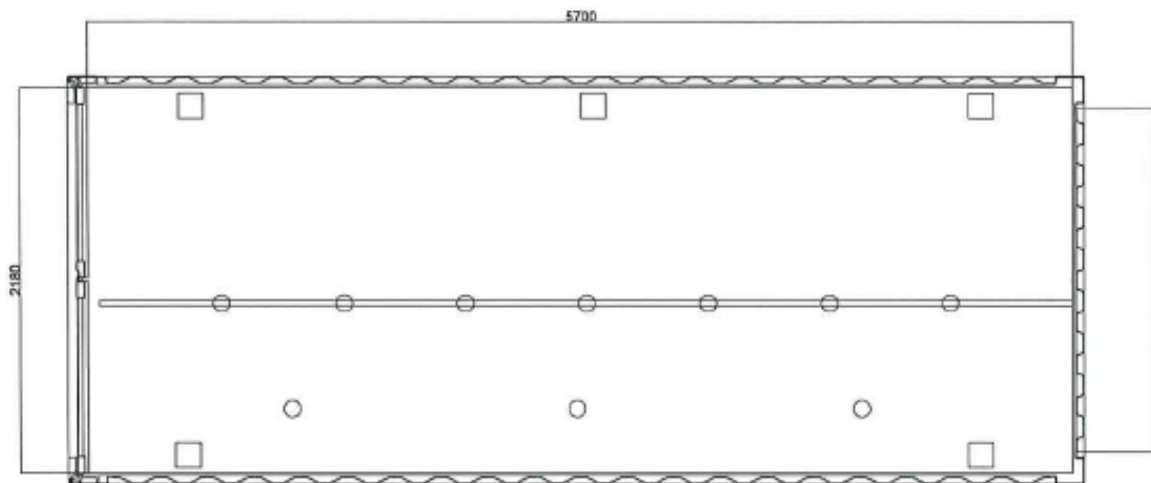
All exhibitors will be displayed and documented on the HVC website and social media. HVC will develop flyers for ARTBOX promotions.

## **12. ENQUIRIES**

For all further enquiries please contact:

Huon Valley Council  
Arts and Culture Officer  
E: [hvc@huonvalley.tas.gov.au](mailto:hvc@huonvalley.tas.gov.au)  
T: (03) 6264 0300

# ARTBOX



## Gallery Hanging System (Gallery@Home)

10 metres running with 6m rear wall and 2m x 2m side walls  
20 x 3m hanging wire (25kg capacity)  
20 x adjustable hooks